

# Installation & Operational Manual

## Radio Over IP Gateway

### Model RoIP300Dx

Firmware Version 2.9.0.17



## RoIP Box Contents

1. Radio Over IP Gateway
2. Ethernet Cable
3. Radio Interface Cable
4. Power Adaptor 9V DC

For any support,  
Contact: +91-7303211220

**Manufactured by**

**STACKIOT TECHNOLOGIES PRIVATE LIMITED**

[www.stackiot.tech](http://www.stackiot.tech)

[support@stackiot.tech](mailto:support@stackiot.tech)

# Document Data Sheet



Document Data Sheet	
Specification No.	StackIOT/RoIP/300Dx/2024-004
Title of Document	User manual for RoIP Gateway.
Prepared By	StackIOT Technologies Private Limited
Abstract	This document specifies the use of RoIP Gateway.

## Revision

Version	Chapter/Annexure	Revision	Effective From
StackIOT/RoIP/300Dx/2024-004	All	Ver: 1.0	22/Feb/2023
	All	Ver: 1.1	28/Mar/2024

For any support, email us at [support@stackiot.tech](mailto:support@stackiot.tech)

Manufactured by

**STACKIOT TECHNOLOGIES PRIVATE LIMITED**

[www.stackiot.tech](http://www.stackiot.tech)

[support@stackiot.tech](mailto:support@stackiot.tech)

# INDEX

## BASIC INSTALLATION

- Hardware Interface Overview ..... 4
- Hardware Front Overview ..... 5
- ROIP Quick Setup ..... 6

## SETTINGS CONFIGURATION

- Computer IP Configuration ..... 7
- Factory Default ROIP Settings ..... 9
- ROIP Configuration ..... 9
- Local-IP Settings Configuration ..... 10
- Server IP Configuration ..... 11
- Radio Settings Configuration ..... 12
- Reset ROIP to factory default ..... 14

## RADIO CONFIGURATION

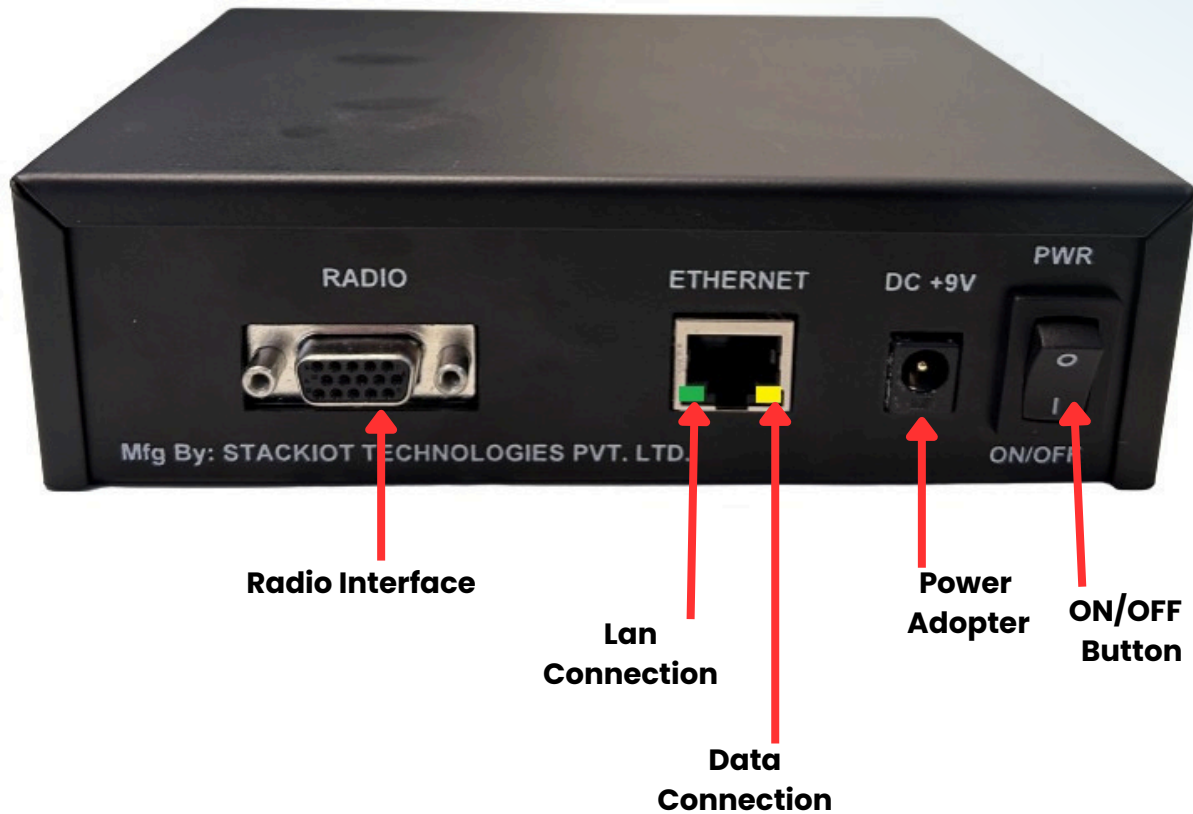
- Interface Cable Connections ..... 15

## QUICK TROUBLESHOOT ..... 16

# BASIC INSTALLATION



## Hardware Interface Overview



CONNECTOR TYPE	INTERFACE	DESCRIPTION
Power connector	Power interface	Power connector to provide external DC power supply to ROIP
Ethernet (RJ45 )	LAN interface	LAN port provides LAN connectivity with other ROIP or Computers.
DB-15 Pin	Radio Interface	Radio connector to interface with Radio

Manufactured by

**STACKIOT TECHNOLOGIES PRIVATE LIMITED**

[www.stackiot.tech](http://www.stackiot.tech)

[support@stackiot.tech](mailto:support@stackiot.tech)

## Hardware Front Overview



## LED Notifications

LED	COLOR	STATUS	DESCRIPTION
PWR	RED	ON	System Power ON
		OFF	System Power OFF
LINK	RED	Fast Blinking	Not Connected
		Slow Blinking	Connected to Server. Call Disconnect Mode.
		ON	Connected to Server.
PTT	Green	ON	Radio Set connected is Transmitting Audio.
CSQ	Yellow	ON	Radio Set connected is Receiving Audio.

Manufactured by

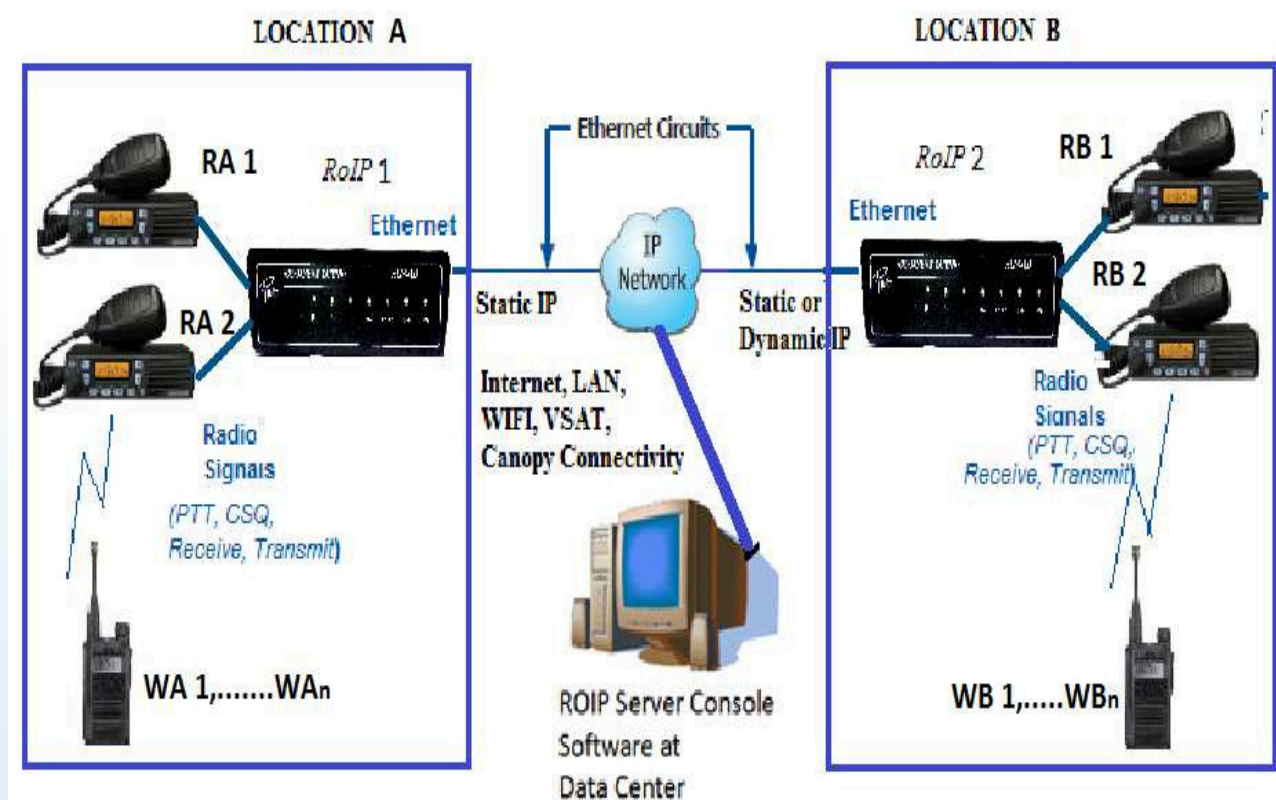
**STACK IOT TECHNOLOGIES PRIVATE LIMITED**

[www.stackiot.tech](http://www.stackiot.tech)

[support@stackiot.tech](mailto:support@stackiot.tech)

## ROIP Quick Setup Guide

- Plug the Power Adaptor in RoIP
- Connect Lan Cable in the RoIP and other end to your Laptop/ Desktop
- Configure your Laptop/ Desktop Ethernet Adapter IPv4 Settings to Manual with following IP Settings:  
(IP Address / Subnet Mask)  
192.168.1.20 / 255.255.255.0
- Open Web Browser and enter RoIP Default IP: 192.168.1.80
- Default Login Password is : admin
- Open IP config Settings
- Configure the Local IP Settings of ROIP Device which you need. Click on Save and reboot.
- Connect Radio Interface Cable at RoIP Radio Port (DB-15 Pin Connector) and other end at Radio Accessory Connector Port
- Once the RoIP Link Led turns to Permanent On, your RoIP System is connected and Ready to Use.



Manufactured by

**STACKIOT TECHNOLOGIES PRIVATE LIMITED**

[www.stackiot.tech](http://www.stackiot.tech)

[support@stackiot.tech](mailto:support@stackiot.tech)

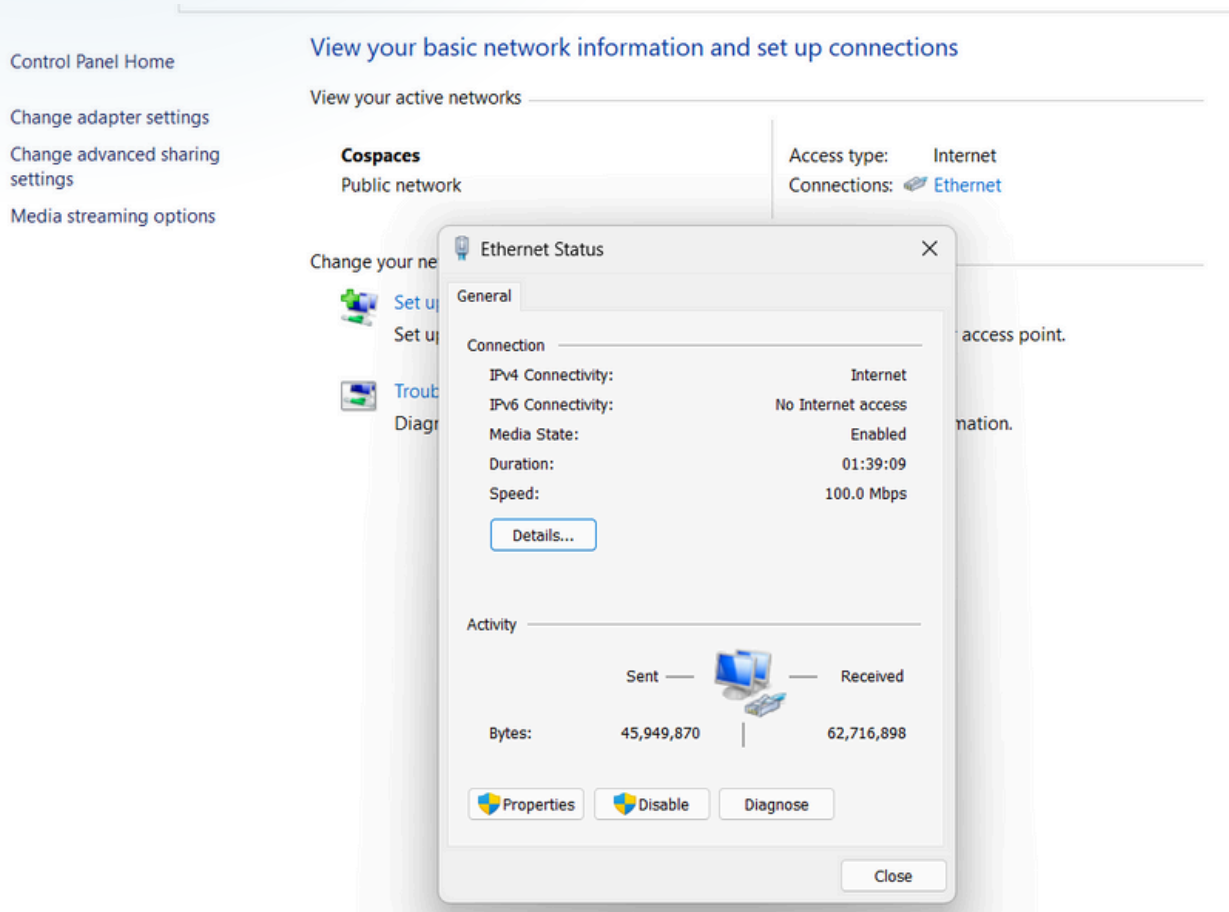


# SETTINGS CONFIGURATION



## Computer IP Configuration to configure ROIP

- Go to Control Panel-> Network and Internet-> Network and Sharing Center
- Click on Local Area Connection/ Wireless Network Connection.
- Click "Properties".



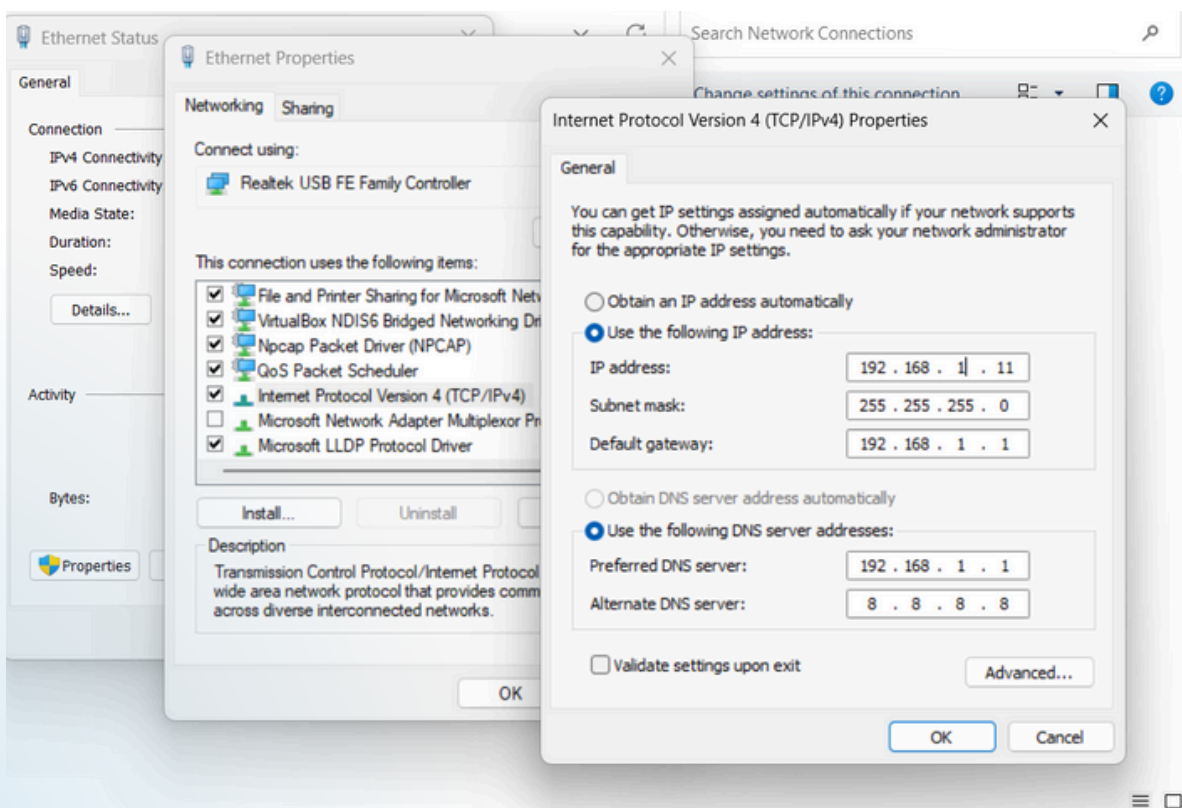
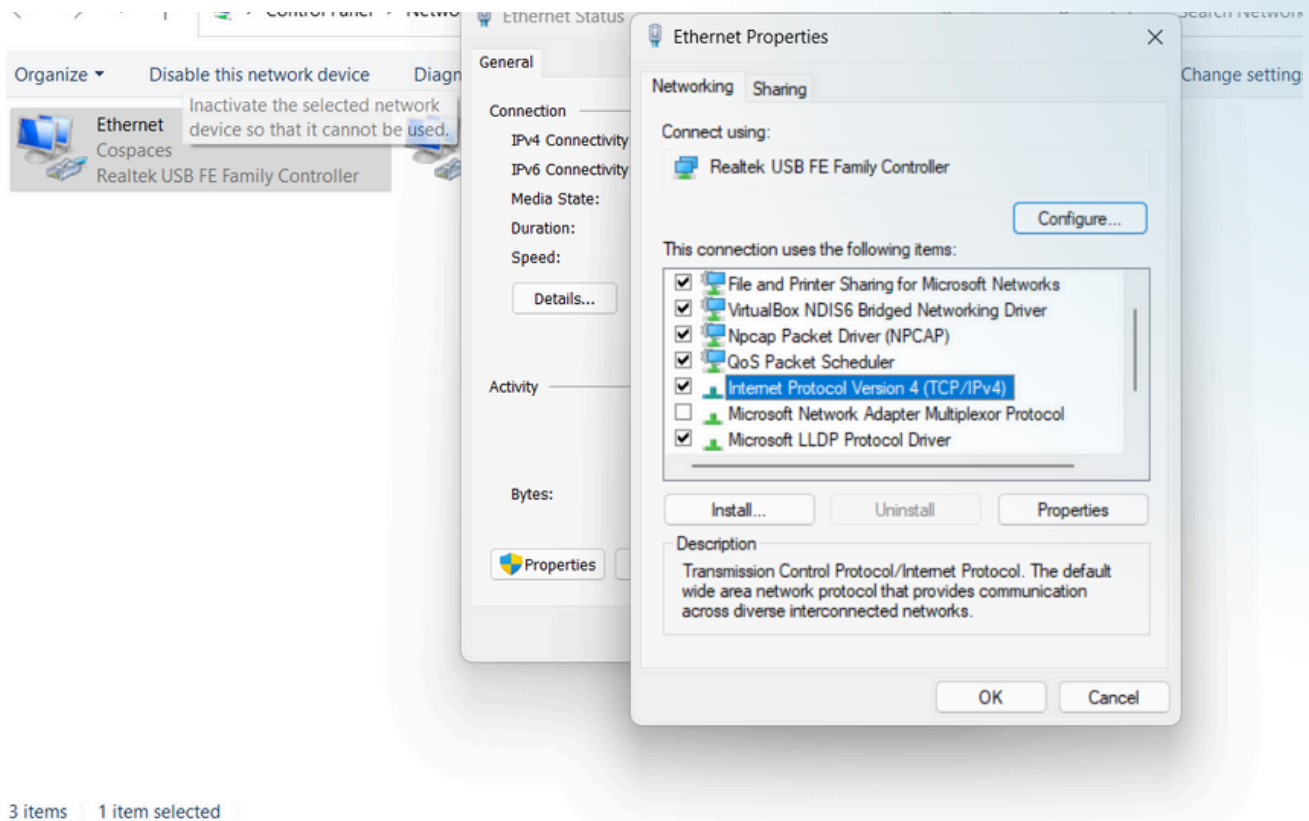
- Select "Internet Protocol Version 4 TCP/IPv4" and Click "Properties".
- Select "Use the following IP address" option.
- Enter IP Address of computer (should be in the same local network range as of ROIP). If ROIP is in default mode, enter "192.168.1.x" (x is any value from 1 to 254 other than 80)
- Enter Subnet Mask. If ROIP is in default mode, enter "255.255.255.0"
- Enter Default Gateway. If ROIP is in default mode, enter "192.168.1.1"

Manufactured by

**STACK IOT TECHNOLOGIES PRIVATE LIMITED**

[www.stackiot.tech](http://www.stackiot.tech)

[support@stackiot.tech](mailto:support@stackiot.tech)



Manufactured by

**STACK IOT TECHNOLOGIES PRIVATE LIMITED**

[www.stackiot.tech](http://www.stackiot.tech)

[support@stackiot.tech](mailto:support@stackiot.tech)



## Factory Default ROIP Settings

### IP Settings:

Local IP: "192.168.1.80"

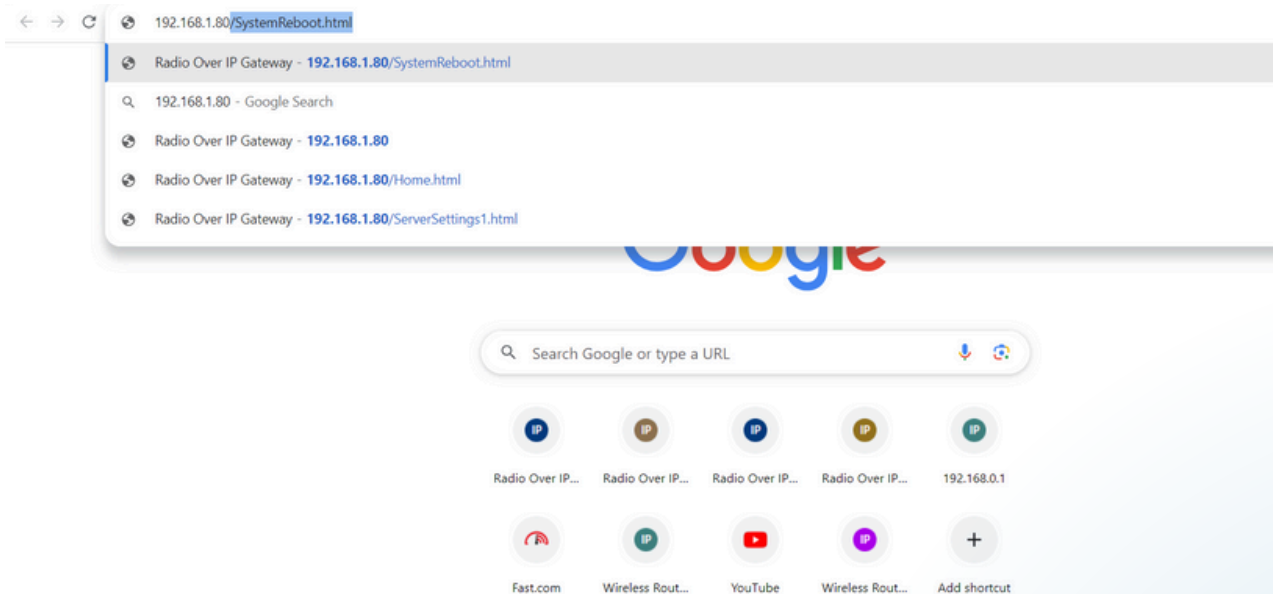
Subnet Mask: "255.255.255.0"

Gateway: "192.168.1.1"

Password: "admin" (without using "")

## ROIP Configuration

- Connect ROIP to a computer/laptop using Ethernet Cable and follow "Computer IP Configuration" procedure.
- Open a Web browser (Internet Explorer, Mozilla Firefox, Chrome, etc) on the computer.
- Enter the Local IP address of the ROIP on the address bar of web browser as shown below ( factory default: "192.168.1.80"):



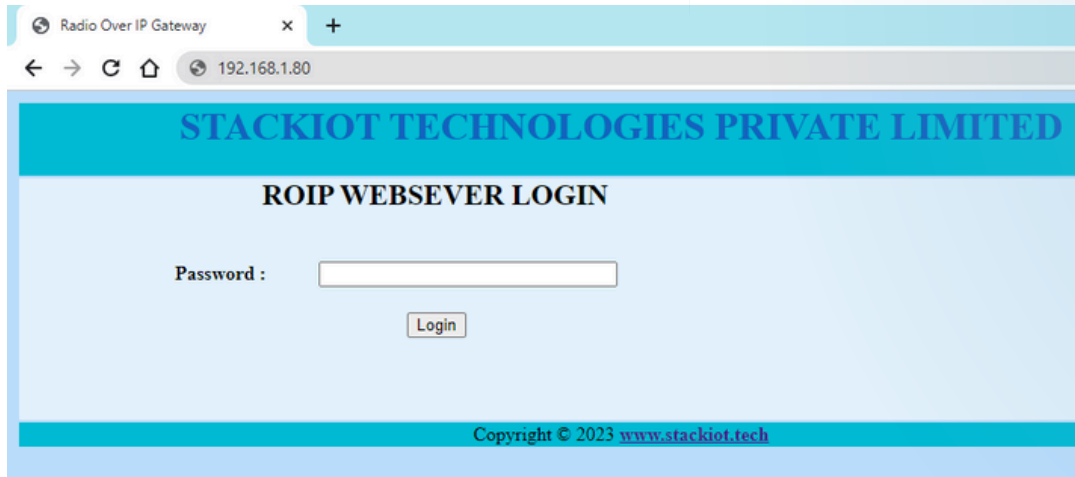
- A Login page will appear as shown below. Enter login password and press Login (factory default: admin).

Manufactured by

**STACK IOT TECHNOLOGIES PRIVATE LIMITED**

[www.stackiot.tech](http://www.stackiot.tech)

[support@stackiot.tech](mailto:support@stackiot.tech)



- Radio Over Ip Gateway Settings Home Page will appear as below.



## Local-IP Settings Configuration

- Select "IP Config Settings" on the Home Page.
- An IP Configuration Settings Page will open as shown below.
- Modify values as mentioned in "System Configuration".
- Click on Save to confirm the changes.
- Reset Power of Roip for changes to take effect.

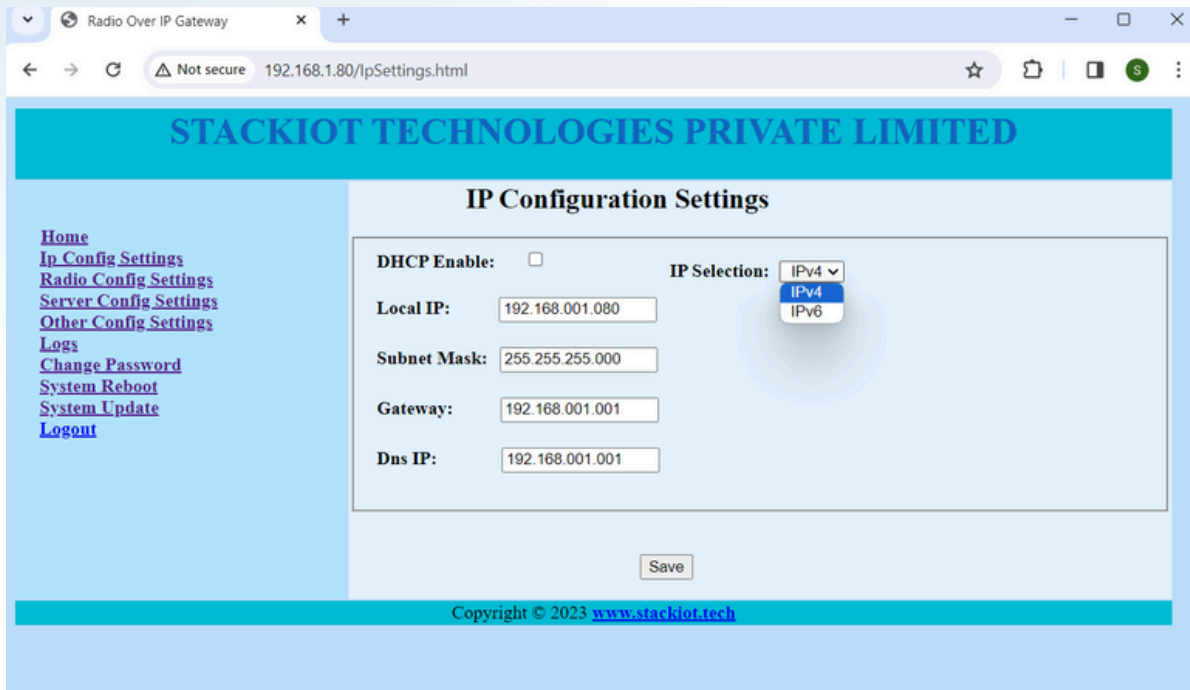
Manufactured by

**STACKIOT TECHNOLOGIES PRIVATE LIMITED**

[www.stackiot.tech](http://www.stackiot.tech)

[support@stackiot.tech](mailto:support@stackiot.tech)

- You can also change IP Configuration between IPv4 and IPv6 in IP Settings Configuration
- Select DHCP Enable Checkbox to request IP Configuration Settings from the Network Gateway / DHCP Server



## Server IP Configuration

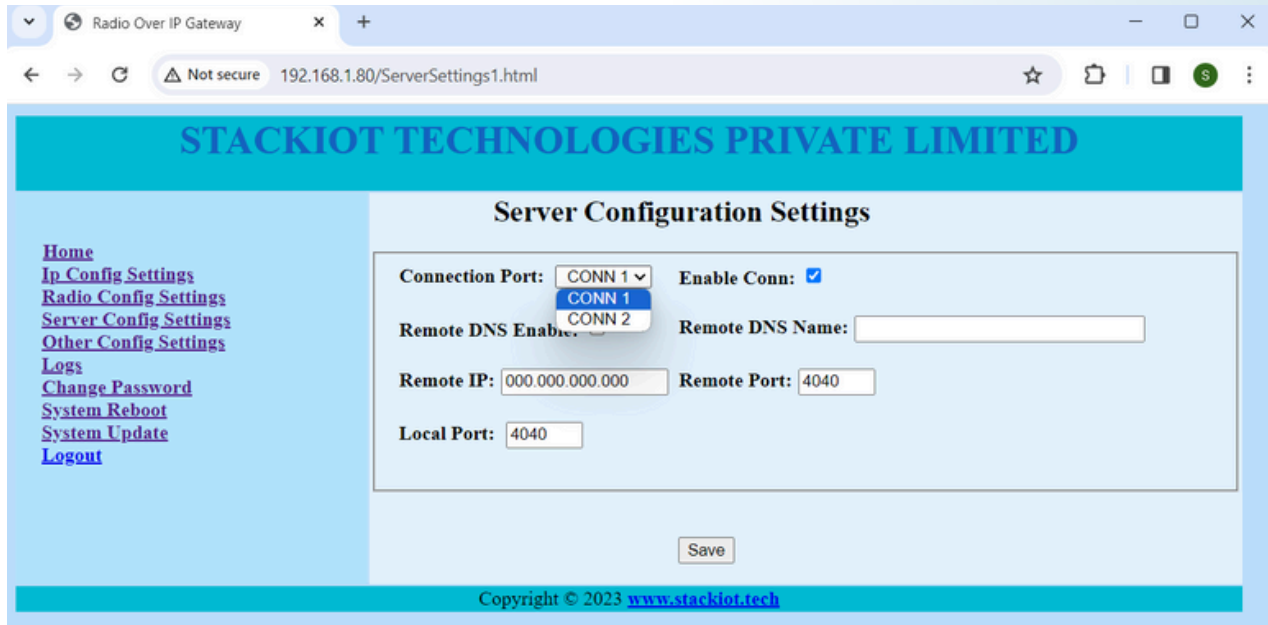
- On this Page, we will configure the Server Connection Details to connect to the RoIP Server.
- There are two connection Ports provided to enter Connection Details for two Server. They could be configured either in Multi-Connection or as Redundant Mode.
- Remote DNS Enable : *Enable this feature if Server DNS Name is available and Server IP keeps on dynamic.*
- Remote IP : *Enter the Server IP Address or leave as blank or 0.0.0.0 if not available.*
- Remote Port: *Enter the Port Address on Server where this RoIP will connect. Check User Configuration Settings on the RoIP Server for this RoIP Account Port details*

Manufactured by

**STACKIOT TECHNOLOGIES PRIVATE LIMITED**

[www.stackiot.tech](http://www.stackiot.tech)

[support@stackiot.tech](mailto:support@stackiot.tech)

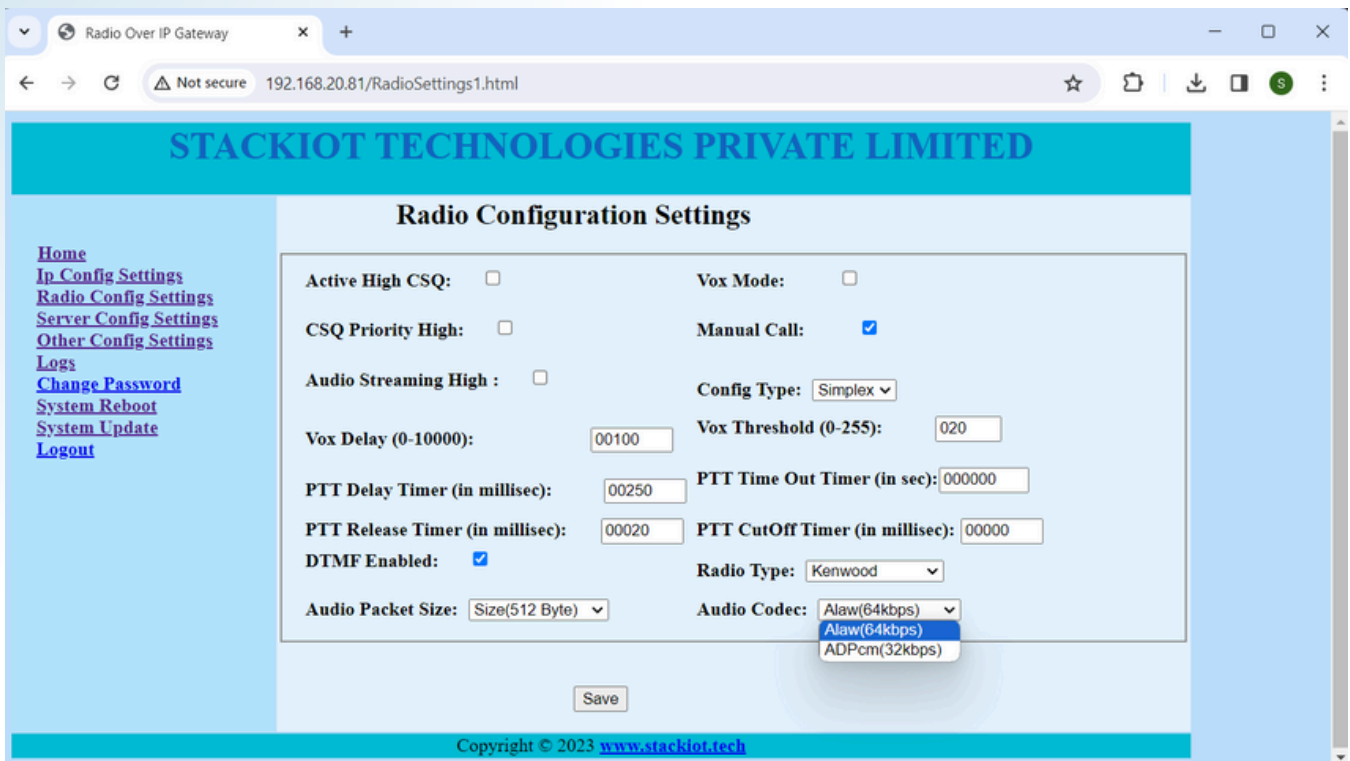


- Local Port: This is the Local Port of RoIP Device from which it will make the IP Connection to Server. Leave it as default. It would be 4040 for Connection 1 and 4041 for Connection 2.
- Click on Save
- Click on System Reboot after Saved Successfully is shown.

## Radio Settings Configuration

- Select "Radio Config Settings" on the Home Page.
- A Radio Configuration Settings Page will open as shown below.
- Modify values as mentioned in "System Configuration".
- Click on save to confirm the changes.
- Reset Power of ROIP for changes to take effect.

ROIP Supports interface for all conventional analog and digital radios. Radio Interface port has provision to connect audio, control signals from all radios and also has USB Port, RS232 UART Port to connect to digital signaling. Radio Type Selection for the same can be done in Radio configuration Settings. Audio, Control Signal and Digital Data Signal Configuration of the Radio can also be controlled from this page.



**Radio Configuration Settings**

Active High CSQ: <input type="checkbox"/>	Vox Mode: <input type="checkbox"/>
CSQ Priority High: <input type="checkbox"/>	Manual Call: <input checked="" type="checkbox"/>
Audio Streaming High: <input type="checkbox"/>	Config Type: <input type="text" value="Simplex"/>
Vox Delay (0-10000): <input type="text" value="00100"/>	Vox Threshold (0-255): <input type="text" value="020"/>
PTT Delay Timer (in millisecond): <input type="text" value="00250"/>	PTT Time Out Timer (in sec): <input type="text" value="000000"/>
PTT Release Timer (in millisecond): <input type="text" value="00020"/>	PTT CutOff Timer (in millisecond): <input type="text" value="00000"/>
DTMF Enabled: <input checked="" type="checkbox"/>	Radio Type: <input type="text" value="Kenwood"/>
Audio Packet Size: <input type="text" value="Size(512 Byte)"/>	Audio Codec: <input type="text" value="Alaw(64kbps)"/>

Save

Copyright © 2023 [www.stackiot.tech](http://www.stackiot.tech)

## Key Points

- Active High CSQ: Enable Option if CSQ is Active High.
- Vox Mode: Enable Option for Vox mode operation, CSQ Signal not coming from Radio Set.
- CSQ Priority High: Enable option for permanent Call Active Mode.
- Config Type: Select "Simplex " for Radio Communication (default).
- Vox Delay: Vox Delay value in millisecond, applicable only when Vox mode is enabled.
- Vox Threshold: Minimum threshold audio level to trigger CSQ Signal in Vox mode. (Range: 0 to 255).
- PTT Delay Timer: PTT Audio Delay/Buffering Timer in millisecond.
- PTT Time Out Timer: Max Continuous PTT Enable Timer (in millisecond). Enter 0 to disable the feature.

- PTT Release Timer: CSQ Signal Wait Timer (in millisecond) after PTT signal is disabled.
- PTT Cut off Timer: Transmit Audio Cut off Timer at end to truncate.
- DTMF: Enable Option for DTMF Dialing feature through Hand Sets Held.

## Change Login Password

- Select "Change Password" on the Home Page.
- A Change Login Password Page will open as show on web as shown below.
- Enter "Old Password" , "New Password", Re-Enter "New Password" Click on Save to change password
- Click on System reboot ROIP for changes to take effect..



## Reset ROIP to Factory Default Settings

- Power On the ROIP.
- Locate a small press button at the bottom side of ROIP.
- Press the button for 5-6 seconds while the ROIP wise led on, till all led at the front panel blinks twice.
- Reset Power of ROIP for changes to take effect.

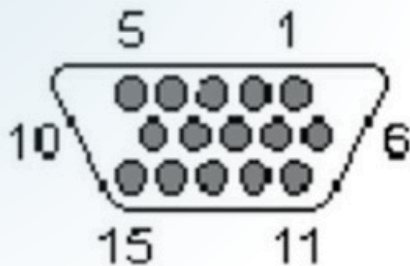


# RADIO CONFIGURATION



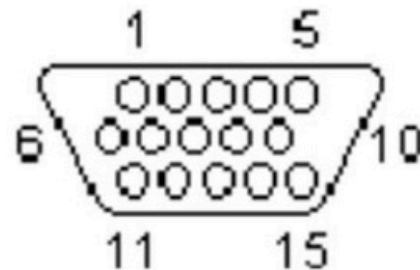
## Interface Cable Connections

ROIP BACK PANEL



Female Head

INTERFACE CABLE



Male Head

### DB-15 (MALE)

- Pin 1 - RX AUDIO
- Pin 2 - TX DATA (RS232)\* (Optional)
- Pin 3 - RX DATA (RS232)\* (Optional)
- Pin 4 - TX Audio
- Pin 5 - GND
- Pin 6 - No Connection
- Pin 7 - No Connection
- Pin 8 - No Connection
- Pin 9 - USB\_VCC \*\* (Optional)
- Pin 10 - No Connection
- Pin 11 - No Connection
- Pin 12 - USB DATA - \*\* (Optional)
- Pin 13 - USB DATA + \*\* (Optional)
- Pin 14 - PTT
- Pin 15 - CSQ

### RADIO 26-PIN CONNECTOR COLOUR CODE

PIN 14- BROWN

PIN 11- WHITE

PIN 5- BLACK

PIN 3- GREEN

PIN 1- RED

PIN 2- ORANGE

PIN 17- YELLOW

PIN 20- BLUE

\* Connection for Serial data Interface

\*\* Connection for USB data Interface

Manufactured by

STACKIOT TECHNOLOGIES PRIVATE LIMITED

[www.stackiot.tech](http://www.stackiot.tech)

[support@stackiot.tech](mailto:support@stackiot.tech)

# QUICK TROUBLESHOOT



Indication	Problem	Resolution
Link Led Off	Ethernet not initialized	Reset Power of Roip and check for Lan Connection Led on the Ethernet (RJ45) Connector.
Link Led Blinking Fast	Connection Not Established	Check Lan Connection. Check Ping status of both IP. Check ROIP IP Configuration
Lan Connection Led Off/Blinking	Not Connected to LAN	Check Ethernet Cable.
Radio Receiving but CSQ Led not glowing	ROIP not receiving	Check Interface Cable. Check Radio Configuration Settings for CSQ mode or Vox mode. Check Radio Settings.
PTT Led glowing but Radio not transmitting	Radio not transmitting	Check Interface Cable. Check Radio Settings.
ROIP's CSQ Led glowing but other ROIP's PTT Led not glowing	Connection Break	Check Lan Connection. Check Ping status of both IP. Check ROIP IP Configuration.

Manufactured by

**STACKIOT TECHNOLOGIES PRIVATE LIMITED**

[www.stackiot.tech](http://www.stackiot.tech)

[support@stackiot.tech](mailto:support@stackiot.tech)

# NOTES

## Interface Cable Connections

ROIP (DB-15 Male)	Description	Color Coding For Motorola	MOTOROLA XIRM	KENWOOD NX-3720
PIN 5	GND	Black	PIN 5	PIN 15
PIN 4	TX AUDIO (MIC+)	White	PIN 11	PIN 5
PIN 15	CARRIER (CSQ DETECT)	Blue	PIN 20	PIN 11
PIN 14	PTT	Yellow	PIN 17	PIN 10
PIN 1	RX AUDIO (SPK+)	Brown	PIN 14	PIN 4
PIN 2	TXDATA		-	PIN 7
PIN 3	RXDATA		-	PIN 6
PIN 9	PWR 5V	Green	PIN 3	-
PIN 12	USB DATA ( + )	Orange	PIN 2	
PIN 13	USB DATA ( - )	Red	PIN 1	