

Installation & Operational Manual

Radio Over IP Gateway

Model RoIP-300D

Firmware Version 2.34.0.14



RoIP Box Contents

1. Radio Over IP Gateway
2. Ethernet Cable
3. Radio Interface Cable
4. Power Adaptor 9V DC

For any support, email us at support@stackiot.tech

Manufactured by

STACKIOT TECHNOLOGIES PRIVATE LIMITED

www.stackiot.tech

support@stackiot.tech

INDEX

BASIC INSTALLATION

| | |
|-------------------------------------|---|
| • Hardware Interface Overview | 3 |
| • Hardware Front Overview | 4 |
| • ROIP Quick Setup | 5 |

SETTINGS CONFIGURATION

| | |
|---|----|
| • Computer IP Configuration | 6 |
| • Factory Default ROIP Settings | 8 |
| • ROIP Configuration | 8 |
| • Local-IP Settings Configuration | 9 |
| • Server IP Configuration | 10 |
| • Radio Settings Configuration | 11 |
| • Change Login Password | 13 |
| • Reset ROIP to factory default | 13 |

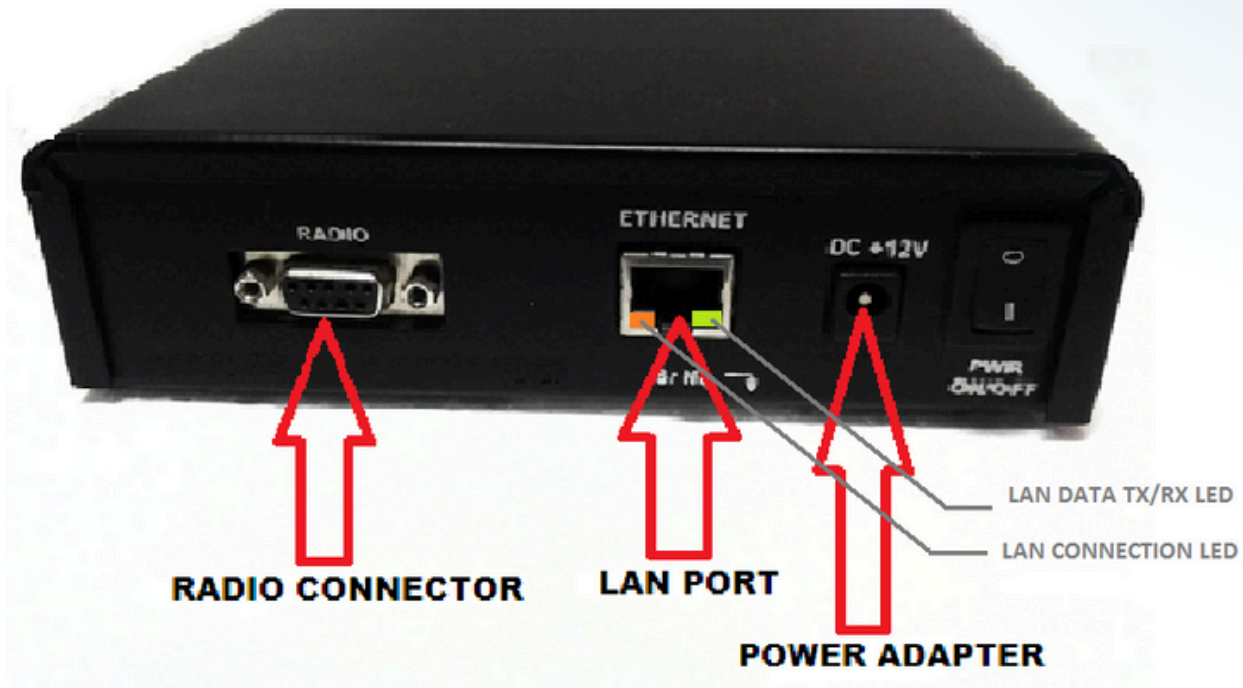
RADIO CONFIGURATION

| | |
|-------------------------------------|----|
| • Interface Cable Connections | 14 |
|-------------------------------------|----|

| | |
|---------------------------------|-----------|
| QUICK TROUBLESHOOT | 15 |
|---------------------------------|-----------|

BASIC INSTALLATION

Hardware Interface Overview



| CONNECTOR TYPE | INTERFACE | DESCRIPTION |
|------------------|-----------------|--|
| Power connector | Power interface | Power connector to provide external DC power supply to ROIP |
| Ethernet (RJ45) | LAN interface | LAN port provides LAN connectivity with other ROIP or Computers. |
| DB-15 Pin | Radio Interface | Radio connector to interface with Radio |

Manufactured by

STACKIOT TECHNOLOGIES PRIVATE LIMITED

www.stackiot.tech

support@stackiot.tech

Hardware Front Overview



LED Notifications

| LED | COLOR | STATUS | DESCRIPTION |
|------|--------|---------------|---|
| PWR | RED | ON | System Power ON |
| | | OFF | System Power OFF |
| LINK | RED | Fast Blinking | Not Connected |
| | | Slow Blinking | Connected to Server. Call Disconnect Mode. |
| | | ON | Connected to Server. |
| PTT | Green | ON | Radio Set connected is Transmitting Audio. |
| CSQ | Yellow | ON | Radio Set connected is Receiving Audio. |

Manufactured by

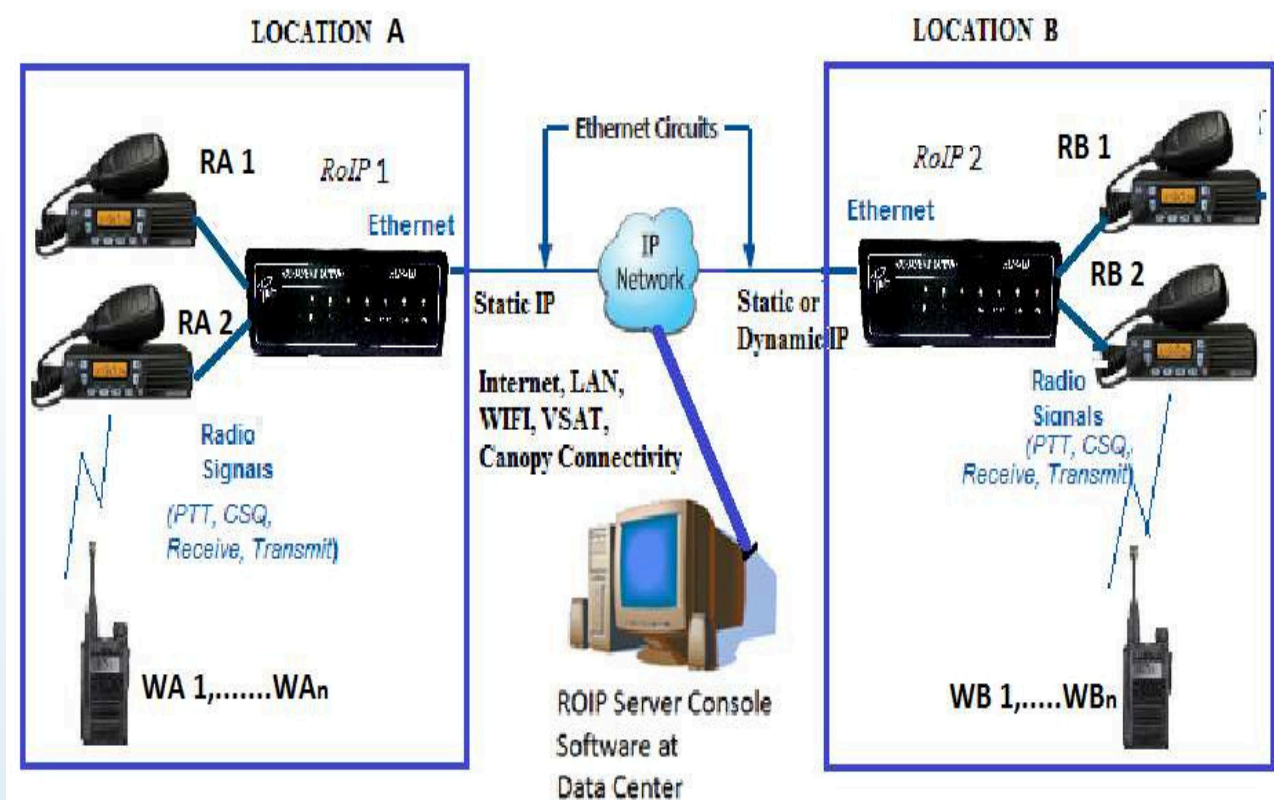
STACKIOT TECHNOLOGIES PRIVATE LIMITED

www.stackiot.tech

support@stackiot.tech

ROIP Quick Setup Guide

- Plug the Power Adaptor in RoIP
- Connect Lan Cable in the RoIP and other end to your Laptop/ Desktop
- Configure your Laptop/ Desktop Ethernet Adapter IPv4 Settings to Manual with following IP Settings:
(IP Address / Subnet Mask)
192.168.1.20 / 255.255.255.0
- Open Web Browser and enter RoIP Default IP: 192.168.1.80
- Default Login Password is : admin
- Open IP config Settings
- Configure the Local IP Settings of ROIP Device which you need. Click on Save and reboot.
- Connect Radio Interface Cable at RoIP Radio Port (DB-15 Pin Connector) and other end at Radio Accessory Connector Port
- Once the RoIP Link Led turns to Permanent On, your RoIP System is connected and Ready to Use.



Manufactured by

STACK IOT TECHNOLOGIES PRIVATE LIMITED

www.stackiot.tech

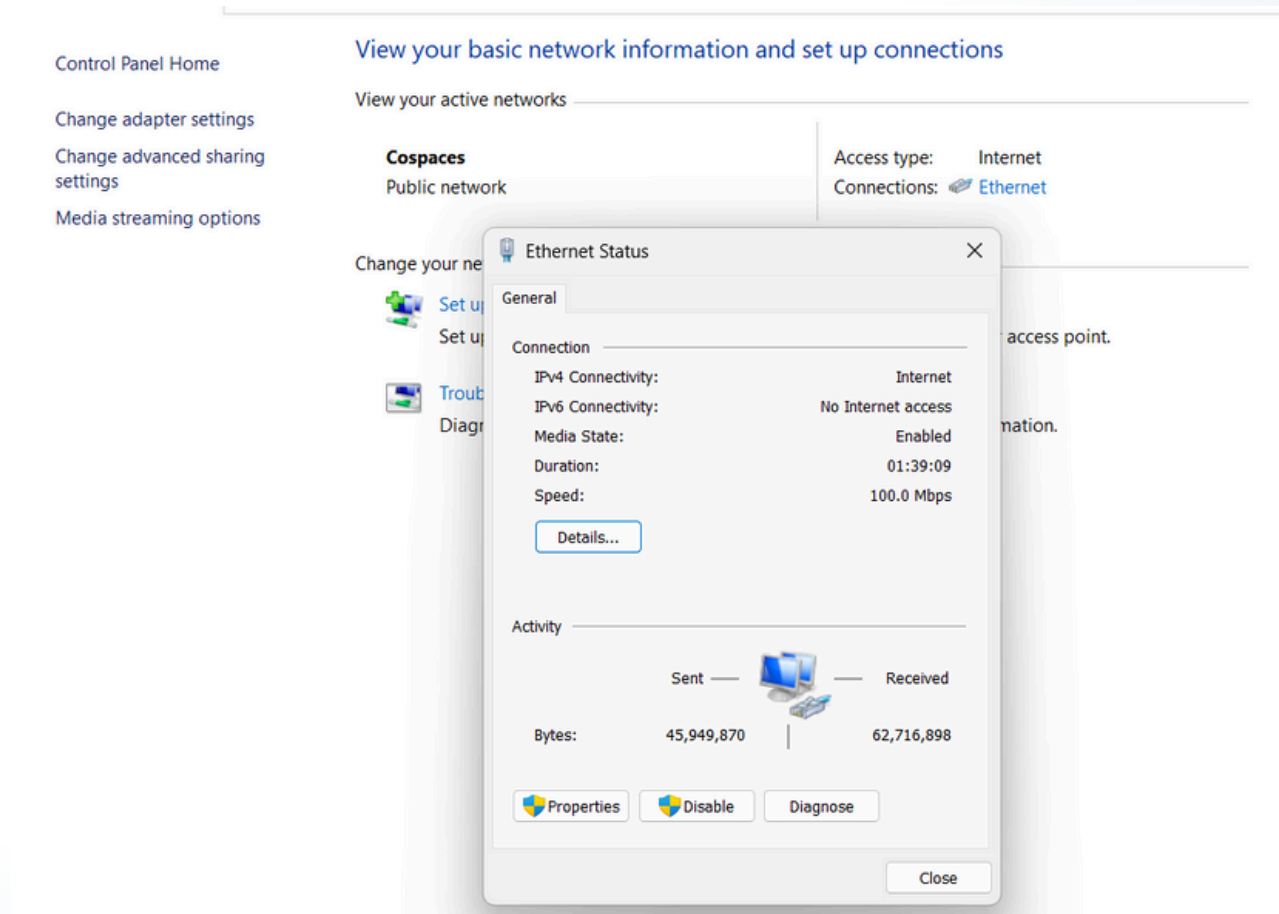
support@stackiot.tech

SETTINGS CONFIGURATION



Computer IP Configuration to configure ROIP

- Go to Control Panel-> Network and Internet-> Network and Sharing Center
- Click on Local Area Connection/ Wireless Network Connection.
- Click "Properties".



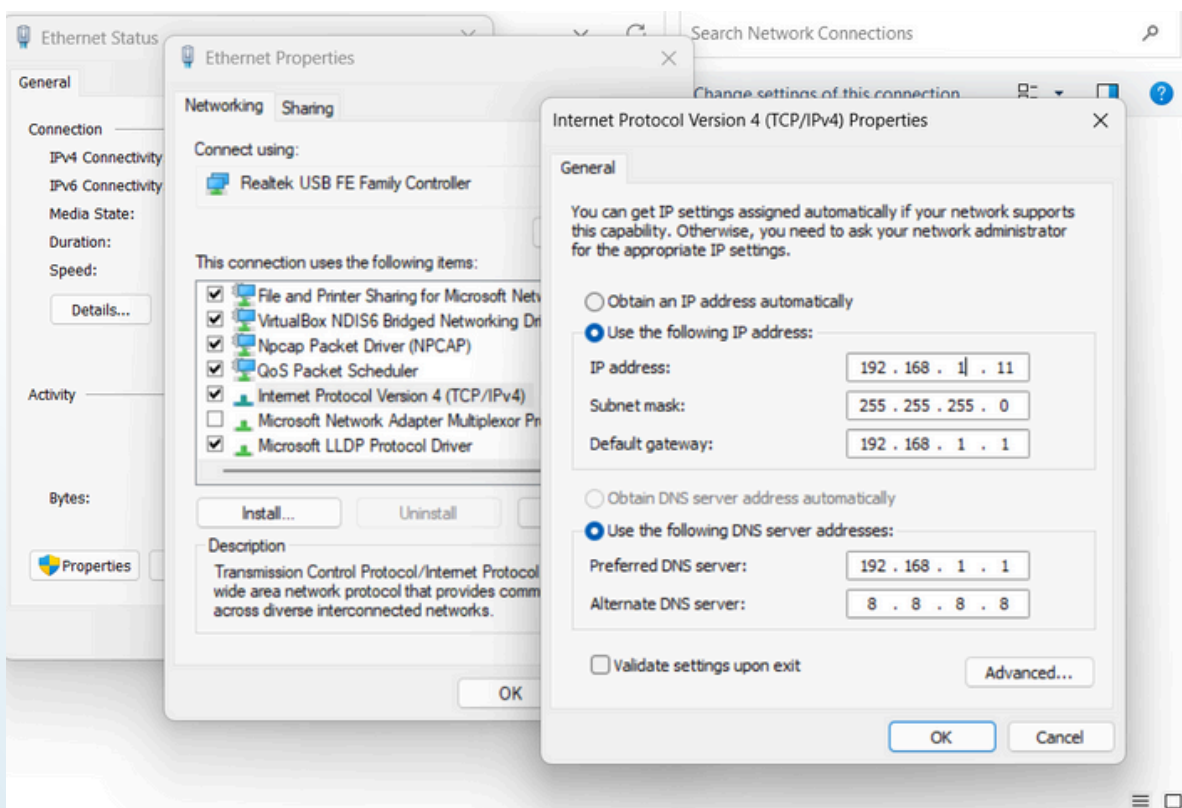
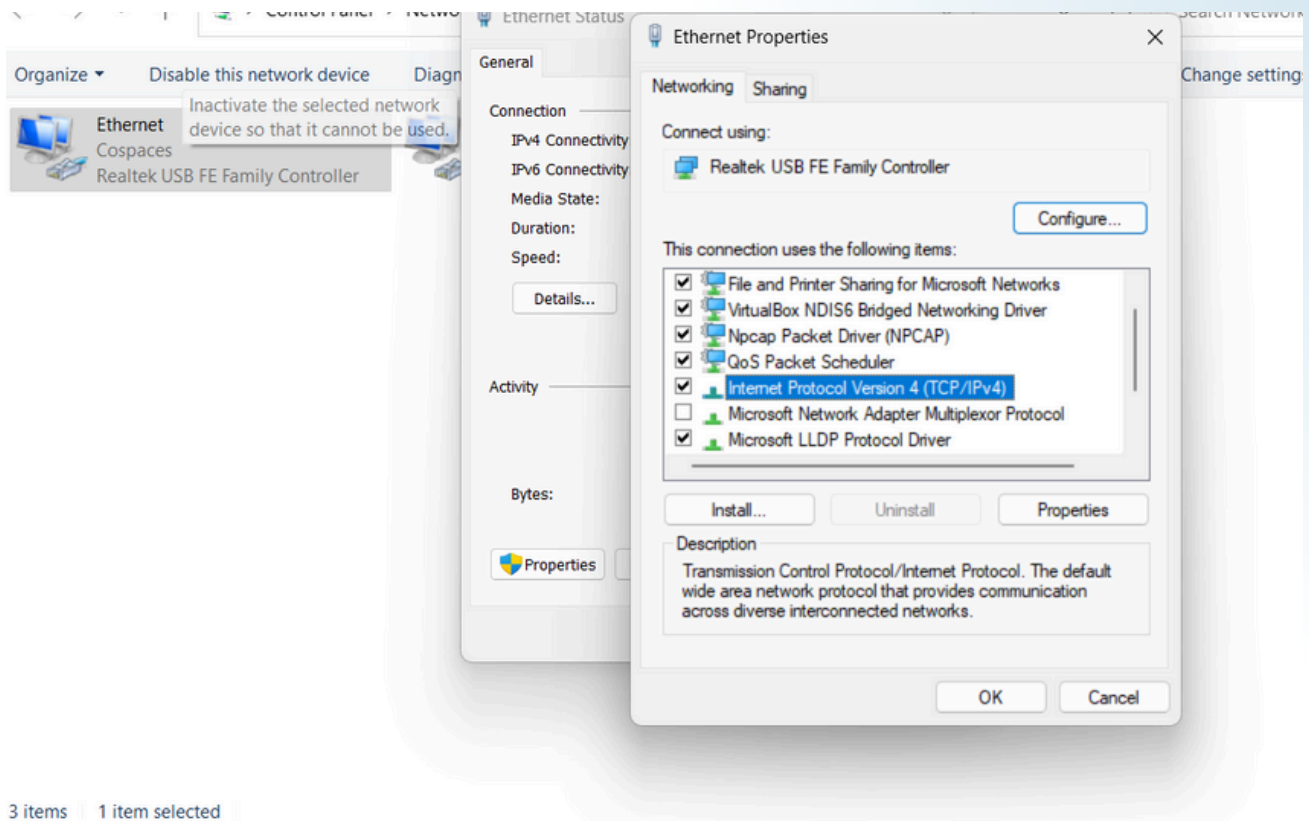
- Select "Internet Protocol Version 4 TCP/IPv4" and Click "Properties".
- Select "Use the following IP address" option.
- Enter IP Address of computer (should be in the same local network range as of ROIP). If ROIP is in default mode, enter "192.168.1.x" (x is any value from 1 to 254 other than 80)
- Enter Subnet Mask. If ROIP is in default mode, enter "255.255.255.0"
- Enter Default Gateway. If ROIP is in default mode, enter "192.168.1.1"

Manufactured by

STACKIOT TECHNOLOGIES PRIVATE LIMITED

www.stackiot.tech

support@stackiot.tech



Manufactured by

STACK IOT TECHNOLOGIES PRIVATE LIMITED

www.stackiot.tech

support@stackiot.tech

Factory Default ROIP Settings

IP Settings:



Local IP: "192.168.1.80"

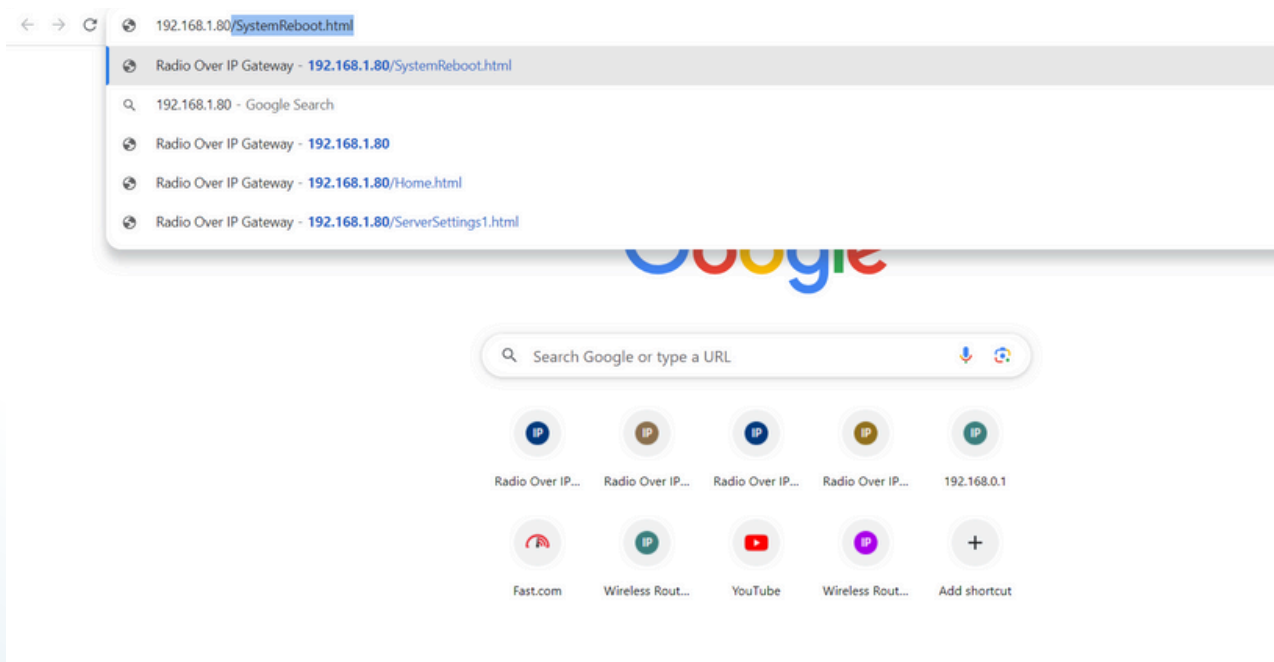
Subnet Mask: "255.255.255.0"

Gateway: "192.168.1.1"

Password: "admin" (without using "")

ROIP Configuration

- Connect ROIP to a computer/laptop using Ethernet Cable and follow "Computer IP Configuration" procedure.
- Open a Web browser (Internet Explorer, Mozilla Firefox, Chrome, etc) on the computer.
- Enter the Local IP address of the ROIP on the address bar of web browser as shown below (factory default: "192.168.1.80"):



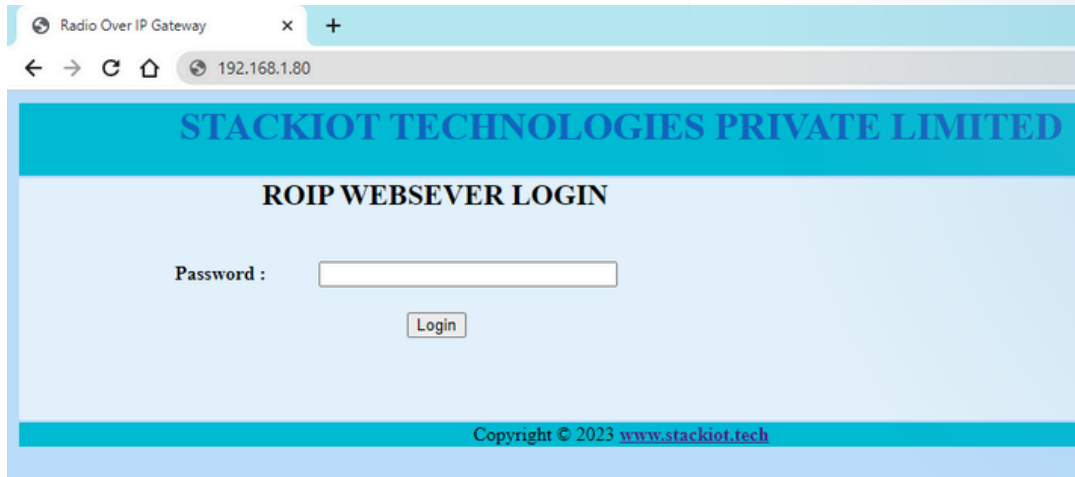
- A Login page will appear as shown below. Enter login password and press Login (factory default: admin).

Manufactured by

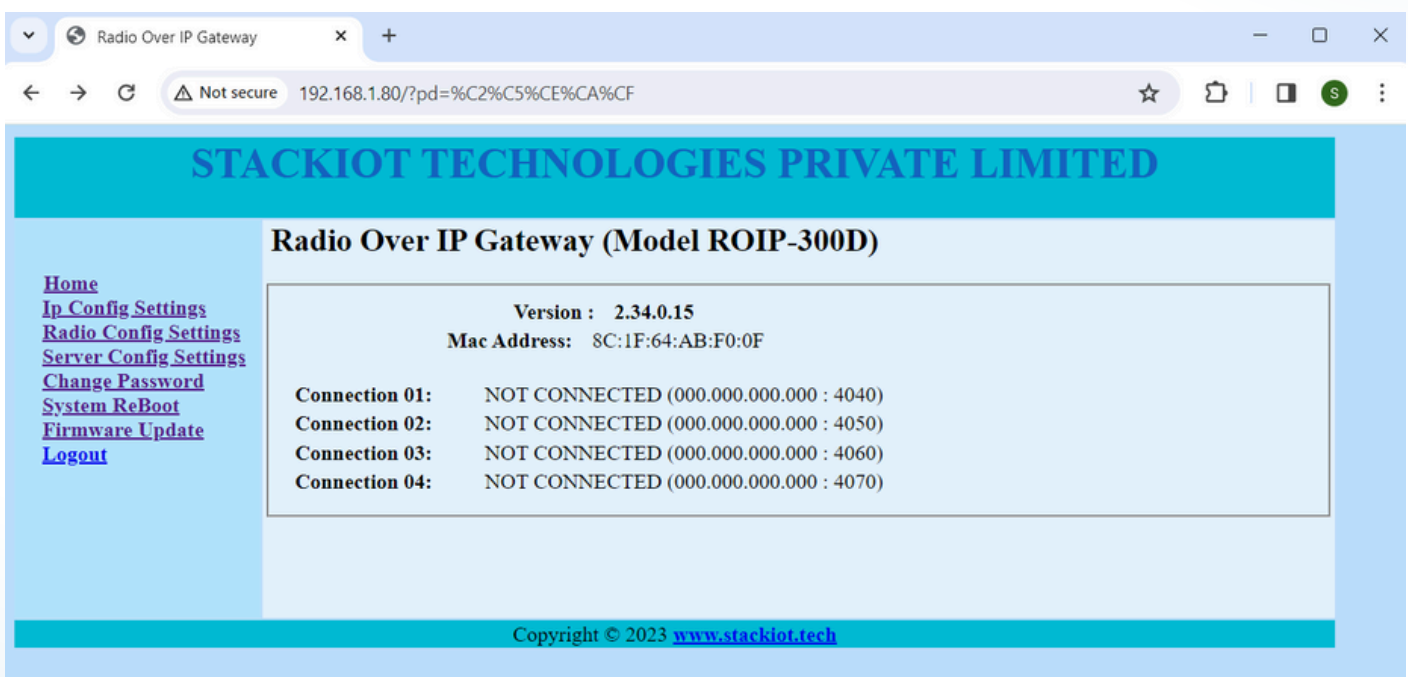
STACK IOT TECHNOLOGIES PRIVATE LIMITED

www.stackiot.tech

support@stackiot.tech



- Radio Over Ip Gateway Settings Home Page will appear as below.



Local-IP Settings Configuration

- Select "IP Config Settings" on the Home Page.
- An IP Configuration Settings Page will open as shown below.
- Modify values as mentioned in "System Configuration".
- Click on Save to confirm the changes.
- Reset Power of Roip for changes to take effect.

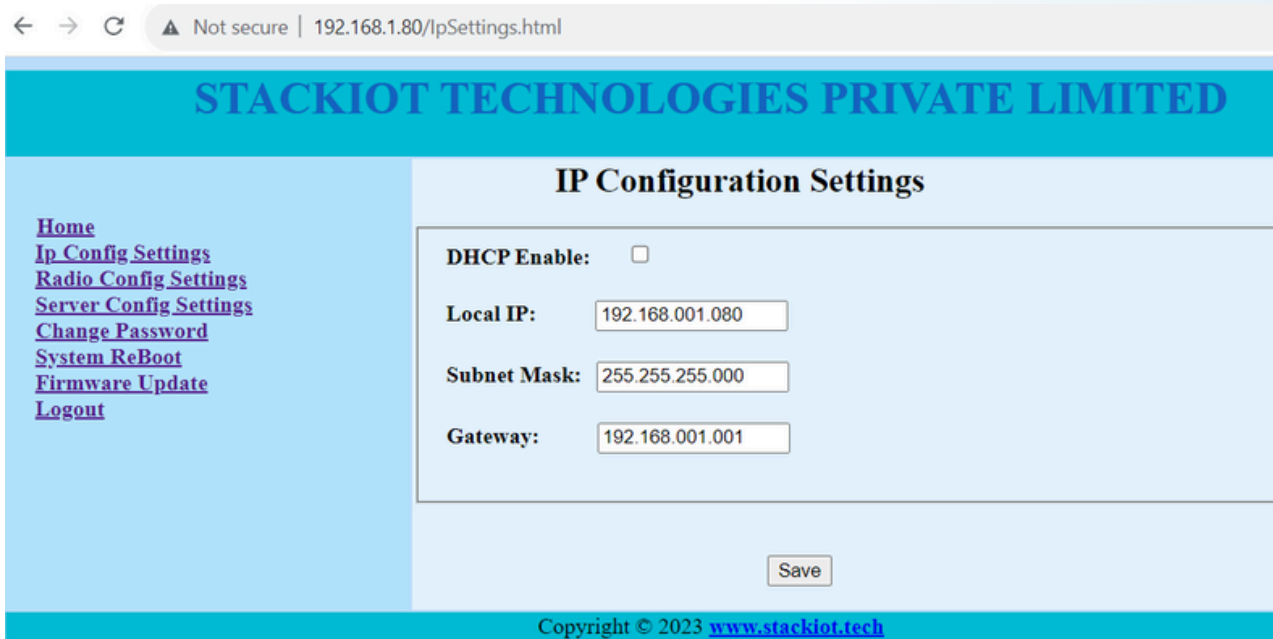
Manufactured by

STACKIOT TECHNOLOGIES PRIVATE LIMITED

www.stackiot.tech

support@stackiot.tech

- You can also change IP Configuration in IP Config Settings.
- Select DHCP Enable Checkbox to request IP Configuration Settings from the Network Gateway / DHCP Server.



The screenshot shows a web browser window with the address bar displaying "Not secure | 192.168.1.80/lpSettings.html". The page header is "STACKIOT TECHNOLOGIES PRIVATE LIMITED". The main content area is titled "IP Configuration Settings". On the left, there is a navigation menu with links: Home, Ip Config Settings, Radio Config Settings, Server Config Settings, Change Password, System ReBoot, Firmware Update, and Logout. The main configuration area contains the following fields:

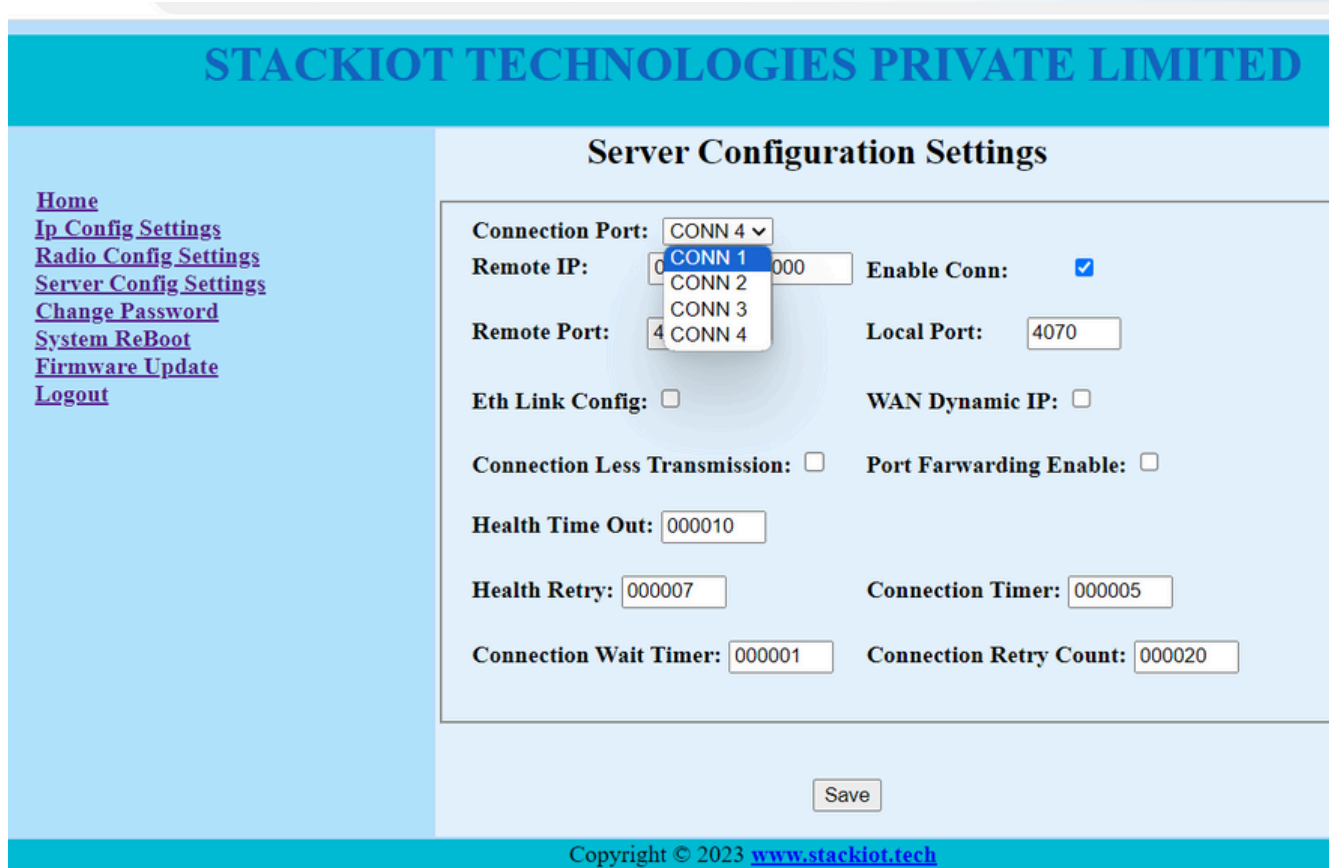
| | |
|--------------|--|
| DHCP Enable: | <input type="checkbox"/> |
| Local IP: | <input type="text" value="192.168.001.080"/> |
| Subnet Mask: | <input type="text" value="255.255.255.000"/> |
| Gateway: | <input type="text" value="192.168.001.001"/> |

At the bottom right of the configuration area is a "Save" button. The footer of the page reads "Copyright © 2023 www.stackiot.tech".

Server IP Configuration

- On this Page, we will configure the Server Connection Details to connect to the RoIP Server.
- There are four connection Ports provided to enter Connection Details for four Server. They could be configured either in Multi-Connection or as Redundant Mode.
- Remote IP : Enter the Server IP Address or leave as blank or 0.0.0.0 if not available.
- Remote Port: Enter the Port Address on Server where this RoIP will connect. Check User Configuration Settings on the RoIP Server for this RoIP Account Port details
- Local Port: This is the Local Port of RoIP Device from which it will make the IP Connection to Server. Leave it as default. It would be 4040 for Connection-1 and 4050 for Connection-2 by default and so on.

- Click on Save
- Click on System Reboot after Saved Successfully is shown.



STACKIOT TECHNOLOGIES PRIVATE LIMITED

Server Configuration Settings

[Home](#)
[Ip Config Settings](#)
[Radio Config Settings](#)
[Server Config Settings](#)
[Change Password](#)
[System ReBoot](#)
[Firmware Update](#)
[Logout](#)

Connection Port: (Dropdown menu open showing: CONN 1, CONN 2, CONN 3, CONN 4)

Remote IP: Enable Conn: ☒

Remote Port: Local Port:

Eth Link Config: ☐ WAN Dynamic IP: ☐

Connection Less Transmission: ☐ Port Forwarding Enable: ☐

Health Time Out:

Health Retry: Connection Timer:

Connection Wait Timer: Connection Retry Count:

Copyright © 2023 www.stackiot.tech

Radio Settings Configuration

- Select "Radio Config Settings" on the Home Page.
- A Radio Configuration Settings Page will open as shown below.
- Modify values as mentioned in "System Configuration".
- Click on save to confirm the changes.
- Reset Power of ROIP for changes to take effect.

STACKIOT TECHNOLOGIES PRIVATE LIMITED

Radio Configuration Settings

[Home](#)
[Ip Config Settings](#)
[Radio Config Settings](#)
[Server Config Settings](#)
[Change Password](#)
[System ReBoot](#)
[Firmware Update](#)
[Logout](#)

Active High CSQ: ☐

Vox Mode: ☐

CSQ Priority High: ☐

Manual Call: ☒

Audio Streaming High : ☐

Config Type:

Vox Delay (0-10000):

Vox Threshold (0-255):

PTT Delay Timer (in millise):

PTT Time Out Timer (in sec):

PTT Release Timer (in millise):

PTT CutOff Timer (in millise):

DTMF Enabled: ☐

Copyright © 2023 www.stackiot.tech

Key Points

- Active High CSQ: Enable Option if CSQ is Active High.
- Vox Mode: Enable Option for Vox mode operation, CSQ Signal not coming from Radio Set.
- CSQ Priority High: Enable option for permanent Call Active Mode.
- Config Type: Select "Simplex " for Radio Communication (default).
- Vox Delay: Vox Delay value in millisecond, applicable only when Vox mode is enabled.
- Vox Threshold: Minimum threshold audio level to trigger CSQ Signal in Vox mode. (Range: 0 to 255).
- PTT Delay Timer: PTT Audio Delay/Buffering Timer in millisecond.
- PTT Time Out Timer: Max Continuous PTT Enable Timer (in millisecond). Enter 0 to disable the feature.

Manufactured by

STACKIOT TECHNOLOGIES PRIVATE LIMITED

www.stackiot.tech

support@stackiot.tech

- PTT Release Timer: CSQ Signal Wait Timer (in millisecond) after PTT signal is disabled.
- PTT Cut off Timer: Transmit Audio Cut off Timer at end to truncate.
- DTMF: Enable Option for DTMF Dialing feature through Hand Sets Held.
- Manual Call Enable: Enable Option for permanent Call Active Mode

Change Login Password

- Select "Change Password" on the Home Page.
- A Change Login Password Page will open as show on web as shown below.
- Enter "Old Password" , "New Password", Re-Enter "New Password" Click on Save to change password
- Click on System reboot ROIP for changes to take effect..



The screenshot shows a web browser window with the address bar displaying "192.168.1.80/ChangePassword.html". The page has a blue header with "STACKIOT TECHNOLOGIES PRIVATE LIMITED". On the left, there is a navigation menu with links: Home, Ip Config Settings, Radio Config Settings, Server Config Settings, Change Password (highlighted), System ReBoot, Firmware Update, and Logout. The main content area is titled "Change Login Password" and contains three input fields labeled "Old Password :", "New Password :", and "ReType New Password :". Below these fields is a "Save" button. The footer of the page displays "Copyright © 2023 www.stackiot.tech".

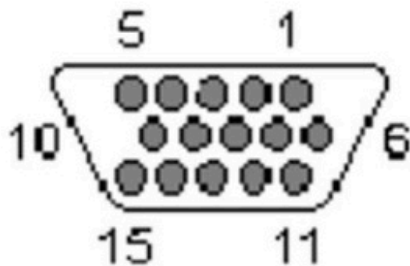
Reset ROIP to Factory Default Settings

- Power On the ROIP.
- Locate a small press button at the bottom side of ROIP.
- Press the button for 5-6 seconds while the ROIP wise led on, till all led at the front panel blinks twice.
- Reset Power of ROIP for changes to take effect.

RADIO CONFIGURATION

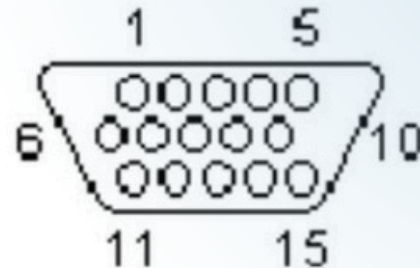
Interface Cable Connections

ROIP BACK PANEL



Female Head

INTERFACE CABLE



Male Head

- **Pin 1 - RX AUDIO (Green Color)**
- **Pin 2 - No Connection**
- **Pin 3 - No Connection**
- **Pin 4 - TX Audio (Yellow Color)**
- **Pin 5 - GND (Black Color)**
- **Pin 6 - Channel Select 1/ Accessory Output Pin (Optional)**
- **Pin 7 - Channel Select 1/ Accessory Output Pin (Optional)**
- **Pin 8 - Channel Select 1/ Accessory Output Pin (Optional)**
- **Pin 9 - Channel Select 1/ Accessory Output Pin (Optional)**
- **Pin 10 - RSSI Signal (Optional)**
- **Pin 11 - No Connection**
- **Pin 12 - No Connection**
- **Pin 13 - No Connection**
- **Pin 14 - PTT (Red Color)**
- **Pin 15 - CSQ (Blue Color)**

Manufactured by

STACKIOT TECHNOLOGIES PRIVATE LIMITED

www.stackiot.tech

support@stackiot.tech

QUICK TROUBLESHOOT



| Indication | Problem | Resolution |
|---|----------------------------|---|
| Link Led Off | Ethernet not initialized | Reset Power of Roip and check for Lan Connection Led on the Ethernet (RJ45) Connector. |
| Link Led Blinking Fast | Connection Not Established | Check Lan Connection. Check Ping status of both IP. Check ROIP IP Configuration |
| Lan Connection Led Off/Blinking | Not Connected to LAN | Check Ethernet Cable. |
| Radio Receiving but CSQ Led not glowing | ROIP not receiving | Check Interface Cable. Check Radio Configuration Settings for CSQ mode or Vox mode. Check Radio Settings. |
| PTT Led glowing but Radio not transmitting | Radio not transmitting | Check Interface Cable. Check Radio Settings. |
| ROIP's CSQ Led glowing but other ROIP's PTT Led not glowing | Connection Break | Check Lan Connection. Check Ping status of both IP. Check ROIP IP Configuration. |

Manufactured by

STACKIOT TECHNOLOGIES PRIVATE LIMITED

www.stackiot.tech

support@stackiot.tech